

Building on Strength



REPORT OF THE TASK FORCE ON SUSTAINABILITY RESEARCH

2016

CONTENTS

I. INTRODUCTION	3
1. Formation of the Task Force	3
2. Task Force Membership	3
3. Vision for Sustainability Research	5
II. ORGANIZATIONAL APPROACH OF THE TASK FORCE	5
1. Meetings and communication	5
2. Preparing the Report	5
3. The Working Groups	6
III. SUSTAINABILITY RESEARCH AND PARTNERSHIPS AT YORK	6
1. York University's Internal Inventory	6
2. External Scan of Sustainability Partnerships and Funding Opportunities	7
IV. RECOMMENDATIONS	8
APPENDIX 1: Profiles of Sustainability Research	10
APPENDIX 2: Inventory of Sustainability Researchers	16
APPENDIX 3: Sustainability Partnerships and Funding Opportunities	44

REPORT OF THE TASK FORCE ON SUSTAINABILITY RESEARCH 2016

I. INTRODUCTION

Sustainability is a prominent research focus at York University (henceforth York), pursued across all Faculties. For example, the Faculty of Environmental Studies (FES) was created in 1968 as Canada's first environment-focused university Faculty. Over the past 20 years, two Organized Research Units have been dedicated to sustainability research, including the FES-based York Centre for Applied Sustainability (YCAS) and the University-wide Institute for Research and Innovation in Sustainability (IRIS). In addition, several Faculty-based research centres focus on the environmental dimensions of sustainability and some university-wide ORUs devote significant research, publishing and outreach to sustainability, such as the Robarts Centre for Canadian Studies and The City Institute. York's sustainability researchers work with colleagues worldwide. The growing interest in sustainability research in the natural, physical and social sciences, as well as the humanities and fine arts, is demonstrated by the emergence of sizeable interdisciplinary clusters that receive funding from Tri-Council grants, Ontario programmes and other external organisations. York also supports a great deal of undergraduate and graduate student research in sustainability illustrating the synergy between sustainability research and teaching, with sustainability themes evident in the course offerings of most Faculties.

1. Formation of the Task Force

The York University 2014-16 Task Force on Sustainability Research (henceforth Task Force) was announced on 23 April 2014 as an initiative sponsored by the Office of the Vice President Research and Innovation (VPRI). The Task Force was created to evaluate current and emergent research strengths in the area of sustainability and to recommend structures to support, integrate, cultivate and publicize York's sustainability research.

The mandate of the Task Force was to:

- Engage broadly the community to identify current and potential sustainability research strengths at York;
- Develop recommendations for structures that best capture York's strengths in sustainability research and promote and foster York's future;
- Provide advice on potential linkages between researchers at York and external partners; and
- Provide a final report to the York community that reflects the Task Force's findings and recommendations.

A central feature of sustainability research at York is environmental responsibility; this conception supports the thematic area of "Public Engagement for a Just and Sustainable World," which is one of the strategic areas identified for development in Building on Our Strengths: York University's Strategic Research Plan 2013-2018.

2. Task Force Membership

A call for nominations for Task Force membership was released on 20 August 2014. Over 30 candidates were proposed through a combination of self-nomination, peer-nomination and nominations by Associate Deans Research. Although a target of 10 to 12 members was stated in the Call for Nominations, 15 candidates were selected from diverse disciplines and Faculties. In the fall of 2015 two new members joined the Task Force to replace members who had to leave the Task Force. These Task Force members include scholars with a broad range of methodological approaches, research goals and levels of research experience.

The 2014-2015 Sustainability Task Force members are:

Teresa Abbruzzese

Assistant Professor,
Department of Urban Studies, LA&PS

Richard Bello

Associate Professor, Geography, LA&PS and
Chair, York University Advisory Committee on Northern
Studies
Coordinator, Environmental Science Program

Kean Birch

Associate Professor,
Business and Society Program, LA&PS

Jennifer Foster (Chair of Task Force)

Associate Professor
Coordinator, Planning Program
Coordinator, Urban Ecologies
Faculty of Environmental Studies

Atifa Karim

Alumni, York University

Sushanta Mitra¹

Professor and Chair of Mechanical Engineering, Lassonde
School of Engineering and
Kaneff Professor in Micro and Nanotechnology for Social
Innovation

Joanna Robinson

Assistant Professor,
Department of Sociology, Glendon College

Chandra Sharma

Watershed Specialist, Etobicoke-Mimico and Senior Man-
ager, Climate Programs
Toronto and Region Conservation Authority

Christopher Ardern

Associate Professor, School of Kinesiology and Health
Science
Research Scientist, Southlake Regional Health Centre

Christopher Bentley

Ph.D. Candidate, Faculty of Education and
Chair, President's Sustainability Council Student Sub-Com-
mittee

Ravi De Costa²

Associate Dean Research,
Associate Professor,
Faculty of Environmental Studies

Ian Garrett

Assistant Professor, Department of Theatre,
Faculty of Fine Arts

Carla Lipsig-Mummé

Professor, Work and Labour Studies, LA&PS;
Director, Work in a Warming World (SSHRC CURA); and
Director, Adapting Canadian Work and Workplaces to Re-
spond to Climate Change (SSHRC Partnership)

Roberto Quinlan²

Associate Professor,
Department of Biology,
Faculty of Science

Catriona Sandilands¹

Professor, Faculty of Environmental Studies and
Former Canada Research Chair in Sustainability and
Culture

Sapna Sharma¹

Assistant Professor, Department of Biology,
Faculty of Science

Barbara Edwards served as the Executive Support from the Office of the VPRI.

¹ September 2014 to August 2015

² September 2014 to December 2015

3. Vision for Sustainability Research

The Task Force developed a vision statement for sustainability research that reflects York's unique history, interdisciplinarity and mandate. This vision statement was developed to help understand how sustainability research is currently constituted at York and to help guide the overall direction of sustainability research in the future. The vision is intended as both a projective and practical means of approaching sustainability research, something that can help identify not only the distinct character of existing research but also possibilities for future research.

“Our vision is that sustainability research generates knowledge that integrates the social, cultural, economic and environmental dimensions of complex challenges at scales ranging from local to global. This interdisciplinary approach emphasizes creativity and collaboration in order to advance research, action and innovation in social, economic and environmental justice.”

II. ORGANIZATIONAL APPROACH OF THE TASK FORCE

1. Meetings and communication

The Task Force met thirteen times between September 2014 and December 2015. Meetings were conducted in person, with some members participating via remote means such as teleconference and webcast. The Task Force also maintains a website at: <http://taskforce.info.yorku.ca>, which communicates basic information about the mandate, announcements, membership and reports, as well as an electronic portal for public input.

2. Preparing the Report

The Task Force engaged in a two-phase consultative process.

Phase 1

Phase 1 was conducted from September 2014 to February 2015. It included presentations to and consultations with: Faculty Councils; the Council of Research Directors; the President's Sustainability Council; the Senate's Academic Policy, Planning and Research Committee; Deans; and Associate Deans Research.

The meetings during Phase 1 had five objectives:

- Introduce the Task Force and its work;
- Solicit early input to the Task Force's work;
- Build awareness of the ongoing work;
- Engage with York members on their sustainability research perspectives; and
- Prepare the York community to participate in Phase 2.

Since September 2014, an online portal was also accessible to York members who wished to convey their input electronically.

Phase 2

Phase 2 of the consultative process began two weeks after the Task Force's draft report was released in April 2015. The same groups consulted during Phase 1 were revisited in order to obtain feedback on the draft report. Phase 2 also included meetings and discussions with student groups, three forums where York community members could contribute their input, and online surveys for all York community members as well as external partners. In addition, the draft report was circulated to a range of external partners who were consulted for feedback.

The consultation during Phase 2 had five objectives:

- Gather feedback on the draft report;
- Request edits (additions or deletions of members and descriptions) to the internal inventory;
- Solicit recommendations from York's internal and external community for future directions in sustainability research;
- Integrate community input into the final version of the Task Force report; and
- Prepare the Task Force's final report for submission to the York community.

3. The Working Groups

Two working groups were organized to conduct an inventory of current sustainability research and external partnerships. The first working group sought to identify York's current sustainability research and researchers across all Faculties. The second working group conducted a scan of present external partnerships and potential partners for the future. Selected external stakeholders were approached for feedback.

The Internal Inventory Working Group was composed of T. Abbruzzese, K. Birch, J. Foster, and S. Mitra. The External Scan Working Group for Current and Potential Partnerships was composed of R. Bello, C. Sandilands, C. Sharma, and S. Sharma.

In the process of carrying out their work, the Task Force members gained significant additional knowledge about the history, funding and growing influence of sustainability research at York. This information provided the context for our recommendations in this Report. A larger picture emerged in two specific areas: (a) the background and structures of sustainability research, and (b) recent growth.

III. SUSTAINABILITY RESEARCH AND PARTNERSHIPS AT YORK

1. York University's Internal Inventory

In order to develop a coherent sense of the range and character of sustainability research at York, the Task Force assembled an inventory of Faculty members and graduate students. This process involved an on-line review of all faculty profiles in relation to the vision of sustainability developed by the Task Force, as well as consultation with the Faculty of Graduate Studies. A preliminary inventory was circulated to all Associate Deans Research for further suggestions. The inventory is attached to this report as Appendix 2. As part of the Phase 2 consultative process, we also welcomed recommendations from the broader York community for additional names and research areas of faculty and others who are conducting sustainability research.

The internal inventory of sustainability research can be updated on a regular basis and reflects the rich diversity of sustainability research across York. Limitations to developing the inventory included limited access to information about student research in sustainability, incomplete or outdated faculty profiles, and scarce information about research conducted by contract faculty. Despite these limitations, the inventory identified nearly 300 York researchers as undertaking sustainability research. Sustainability research at York is distinctly inter-

disciplinary and reflects collaborations that generate knowledge and advance solutions for current problems.

The Task Force identified a number of significant theme areas in sustainability research across different Faculties and disciplinary approaches. A sample of prominent themes includes (alphabetically):

- Alternative energy systems
- Arts-based sustainability initiatives
- Business and sustainability
- Climate policy
- Community-based initiatives for low-carbon transition
- Ecological economics
- Ecological ethics and philosophies
- Ecology and environmental science
- Environmental humanities
- Environmental justice
- Environmental law
- Green management
- Human-animal studies
- Northern communities
- Social strategies for responding to climate change
- Urban sustainability
- Work and climate change

We defined a theme as significant if it has a combination of the following attributes:

- It had an identifiable group of researchers who currently work together;
- It comprised members of an ORU or major research program;
- It may have involved community initiatives over a period of time; and/or
- It involved researchers from two or more Faculties who may have received or are applying for external funding, may have received external (disciplinary, national, international) recognition, and may link their research to teaching, research training, or experiential learning.

The researchers that work in these theme areas generate new knowledge on sustainability, generate funding for research, attract new sustainability scholars and community partners and contribute to education and training.

2. External Scan of Sustainability Partnerships and Funding Opportunities

The external scan had two key objectives. The first was to identify innovative sustainability research at York University, including how it is coordinated and implemented. In consultation with Faculty Research Officers, the working group contacted researchers at York University who have used innovative and collaborative approaches to highlight key examples of sustainability research and partnerships (selected profiles are included in this report). The second objective was to conduct a scan of external granting agencies and funding opportunities available at the local, regional, provincial, national and international scales. While the working group was not able to achieve an all-encompassing scan, the goal was to provide guidance on potential opportunities for funding and partnerships. A list of potential external funding opportunities is provided in Appendix 3.

IV. RECOMMENDATIONS

The following recommendations are proposed as means to promote and foster York's research strengths in the area of sustainability. The recommendations are organized into themes that reflect connections, communication strategies and funding. The recommendations are presented as initiatives and actions that could be implemented over the short term (12 months), medium term (1 to 3 years) and longer term (3+ years).

Connection:

Short-term

- i. Develop a comprehensive inventory of sustainability research at York that will be updated regularly and available to York members.
- ii. Conduct analysis of York's sustainability research strengths to identify four to six broad areas where York researchers are conducting innovative, high impact, collaborative research.
- iii. Establish a York-wide Sustainability Hub focusing on environment and sustainability. The Sustainability Hub will support four to six research nodes that reflect the range of York's disciplinary and interdisciplinary strengths, including exploratory and problem-oriented research as well as areas in which York's research on sustainability is expanding. These nodes will be the sub-units of the Hub's structure and governance.
- iv. Building on existing outreach, coordinate high-level consultation sessions with York's external partners to identify the full range of possibilities and strategies for enhancing research collaboration.

Medium-term

- v. Dedicate physical space to the Sustainability Hub for collaborative research purposes and social interaction, including student space.
- vi. Emphasize York's strengths in the area of internationalization to connect to global issues.
- vii. Connect York sustainability research with universities and centres of excellence for sustainability research globally, including establishing an international York campus.
- viii. Foster private, public and not-for-profit collaborations to advance sustainability research.
- ix. Team with York's immediate community to build strategies for justice and sustainability.

Long-term

- x. Launch York University Press as a publishing, distribution and retail press with a specialty focus on sustainability research, including at least one refereed journal.
- xi. Establish an online, open access sustainability journal that is internationally peer reviewed.

Communication:

Short-term

- xii. Develop an ongoing communications strategy that profiles sustainability research and events at York, including through social media, workshops, brown bag talks, etc.
- xiii. Create an electronic portal that profiles York's strengths in sustainability research.

Medium-term

- xiv. Host an annual international interdisciplinary sustainability research conference that stimulates debates and discussions related to York's vision of sustainability research and connects scholars at York with broader communities at local, regional, national and global scales.
- xv. Cultivate media partnerships to promote York sustainability research and dialogue.

Funding:

Short-term

- xvi. Ensure funding support for the Sustainability Hub, including logistical, capital, and ongoing support.

Medium-term

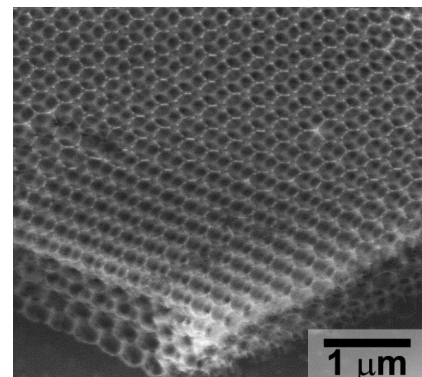
- xvii. Prioritize central funding support for sustainability research at York through the creation of a sustainability fund that provides seed funding or matching funds for both exploratory and applied sustainability research at York.
- xviii. If it is necessary to host the Sustainability Hub within an identified Faculty, the Faculty of Environmental Studies is the most suitable host due to its interdisciplinary nature and commitment to sustainability research.
- xix. Establish Research Chairs in Environment and Sustainability.
- xx. Create mechanisms to attract top graduate students and Post-Doctoral Fellows focusing on sustainability, including scholarships.
- xxi. Establish an endowment fund for a lecture series in sustainability, similar to the Massey Lecture Series.

APPENDIX 1: Profiles of Sustainability Research

Jennifer Chen Research Group:

Nanophotonics and materials for solar energy and biosensing applications

Research on solar energy and biosensing in the Chen group explores the optical effects of nanomaterials for boosting the absorption of materials currently used in solar cells. This is interdisciplinary research that incorporates photonic crystals, which are ordered structures, to localize light onto the material of the crystal (a scanning electron micrograph of the structure is shown below). Through this process, photons can be more easily harvested and the amount of charge generated by a photovoltaic cell can be increased. The research aims to contribute to the advancement of low-cost organic solar cells that may be important for achieving a sustainable future using renewable energy.



Nanomaterials can exhibit rare properties that bridge molecules and bulk, creating a unique relationship between chemistry and engineering. The development of new nanomaterials can provide unparalleled opportunities for advancing various technologies that can lead to improved human health and a more sustainable environment. The research conducted in this interdisciplinary group encompasses materials chemistry, physical characterizations and device engineering, with the overall goal of synthesizing and assembling nanomaterials into 3D and 2D structures via a combination of bottom-up approach and top-down approaches.

Janine Marchessault, Jennifer Foster and Chloe Brushwood Rose

Land|Slide: Possible Futures

Land|Slide: Possible Futures was a groundbreaking large-scale site-specific art exhibition that focused on the relationship between sustainability and urbanization in a rapidly evolving locale. The three-year project culminated in over 30 installations by national and international artists, where the grounds of the 25-acre open-air Marham museum were reinterpreted through a critical and exploratory lens.

The exhibition probed questions around how histories are inscribed, how spaces are inhabited, and what



sustainability means in a complex socioenvironmental landscape like Markham's. The Markham Museum offers rich terrain for such exploration, with its explicit staging of colonial pre-occupations as assumed common heritage. Land|Slide" Possible Futures brought together artists, ecologists, urban planners, educators, civic leaders and the general public. The diverse installations deployed new historical interpretations to build new futures for the use and inhabitation of land.

Susan D. Dion

the inVISIBILITY project

ES, DIGITAL STORYTELLING

A KNOWLEDGE MOBILIZATION PROJECT BY DR. SUSAN D. DION, DR. CARLA RICE, DR. ANNA HUDSON, TANYA SENK & HANNA FOWLIE



In Canadian cities, Indigenous communities are often rendered invisible; dominant representations of us made by others create expectations and many First Nations, Métis and Inuit people move unrecognized through urban spaces. Recently, in response to the amplification of Indigenous voices demanding recognition, Canadians are simultaneously confronting their desire to know and the depth of their own ignorance. In many ways, fear and the discomfort of not knowing maintains a barrier between us, a barrier further reinforced by the seemingly impossible task of acknowledging a colonial history and consideration of how that history positions us differently in relationship to the state, the land, and each other.

With a specific pedagogical purpose *inVISIBILITY: Indigenous in the City* was a two-phase outreach knowledge mobilization project bridging the gap between stakeholders in Education, and Indigenous Communities. Phase One involved a digital storytelling workshop for Indigenous students, parents, and teachers to explore and represent their experiences of being urban and being in school; Phase Two was a three-week art exhibition and speaker series at the John B. Aird Gallery in Toronto. Drawing on knowledge, understanding, and insights gained from an investigation of Aboriginal Education in Toronto schools¹ the goal of *inVISIBILITY* was to create an Indigenous space within the gallery where artists, scholars, film makers, teachers, students, and parents creatively shared their experiences and perspectives with each other, with stakeholders in education, and the broader community. Representing the experiences and perspectives of urban Indigenous communities through art allowed for complex representations of people's lived experiences that supported learning in relationship. Through their work, Indigenous artists simultaneously clarified and complicated stories of schooling, resulting in an exhibition that called on stakeholders in education and the public to think and respond.

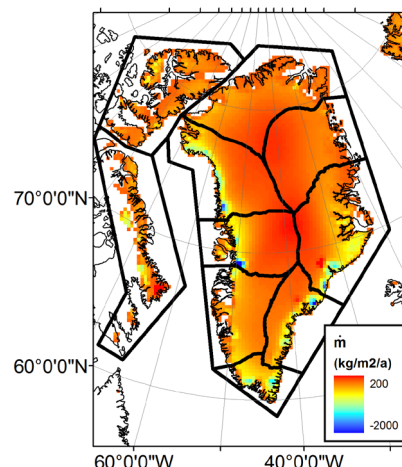
¹ Dion, Susan D.; Johnston, Krista; Rice, Carla, M (2010) *Decolonizing Our Schools Aboriginal Education in the Toronto District School Board*. (Toronto)

William Colgan

Glaciers and climate modeling in the Arctic

This research focuses on interactions between climate and glaciers, in particular the past and future sea level rise contributions of the Greenland ice sheet. The Greenland ice sheet is currently losing about 8000 tonnes of ice per second, around the clock, 365 days a year. This project uses satellite gravity observations to monitor the magnitude and spatial distribution of this ice loss, as this unprecedented rate of ice loss is rapidly reshaping the Earth's gravity field in readily observable ways.

The research also incorporates field observations that are used to identify and measure the physical processes behind the past decade of ice loss. Understanding these processes allows simulation of these processes with computer models to project the next century of ice loss. While most people undoubtedly feel removed from the Greenland ice sheet, the stark societal implications of sea level rise are making glaciology research highly topical. A study published about this research in *Nature Climate Change* (January 2016) documents recent changes in the near-surface layers of the ice sheet that now cause meltwater to runoff to the ocean more rapidly than previously, and was disseminated by over 100 media outlets. By virtue of the intense resources required to monitor glacier globally, glaciology research has become highly international.



Assessing the spatial pattern of recent ice loss: Change in ice mass per unit area across the Canadian Arctic and Greenland, 2003-2009

This research is funded by the European Space Agency with Danish collaborators, and the recent field research is NASA-funded with American collaborators. Unfortunately, many aspects of glacier research, especially field campaigns supported by charter military aircraft or higher performance computing activities powered by fossil fuels, are carbon intensive, and parallel work calculates the carbon footprint associated with these activities, in order to actively minimizing the carbon intensity of climate change research in favour of new technologies such as electric snowmobiles and green data centers.

Sapna Sharma

Are lakes warming around the globe?

Sapna Sharma, Assistant Professor in the Department of Biology, is on the steering committee and is the lead author of two studies published by the Global Lake Temperature Collaboration (GLTC). The GLTC is an international, inter-disciplinary collaboration consisting of over 80 scientists from over 20 countries interested in understanding how lake water temperatures are changing worldwide in response to climatic conditions. This project published a database summarizing water temperature and climatic conditions in 291 lakes across 6 continents using a combination of satellite-based measures collected by NASA and lake specific measurements collected by thousands of scientists over the past 25 years. The total volume of water in these lakes represents more than half of the world's freshwater. The project found that lakes around the world are warming faster than both oceans and air temperature. In fact, Canadian lakes are warming twice as fast as air temperatures, which can have profound effects on lake water quality, favoring increases in algal blooms and depletion of oxygen. Algal blooms can be toxic to fish and animals, result in less potable water for human use, and contribute to loss of recreational activities, including beach closures. In addition, even though lakes in warmer regions are not experiencing temperature changes as extreme as seen in northern lakes, their rates of temperature increase are already reducing fish productivity and food supply in the African Great Lakes. The global assessment of lakes produced through this research shows increases in water temperatures over the past 25 years for over 90% of the ~300 lakes studied. The results of this work demonstrate that it is imperative to include climate impacts in assessments of global freshwaters to ensure that they reflect the diverse environmental and anthropogenic stressors that could threaten the sustainability of global supplies of food and fresh water.

Felipe Montoya

Las Nubes Project, Costa Rica

Las Nubes is a permanent project focusing on interdisciplinary, participatory, action-oriented environmental research, education and community engagement located primarily in the Alexander Skutch Biological Corridor (ASBC) of southern Costa Rica. The project has maintained working relationships with the largest public universities of Costa Rica, independent research institutes, and regional and community organizations, among others. Our aim is to contribute to improved social and environmental wellbeing.



Creating digital capacities.



Las Nubes Forest Reserve.

During the last three years the project has supported numerous graduate student research initiatives, including research on peasant identity and rootedness, agricultural production and gender, art and social movements, sustainable community tourism, environmental impacts of proposed large-scale infrastructure projects, among others. In an effort to contribute to knowledge mobilization Dr. Bunch and Dr. Montoya of FES, in collaboration with the University of Costa Rica, executed an IDRC-funded project to develop digital capacities among the community members and a web-based clearinghouse of information about the ASBC. An output of this project, in collaboration with Scott Library, has been the establishment of a local library and digital resource center in the ASBC.

Las Nubes has had an ongoing relationship with Point Loma University in California monitoring mammals in the ASBC. A completed bird monitoring project has resulted in the publication of a bird guide of the ASBC featuring close to 300 bird species found locally. The ASBC Council has developed a strategic plan that includes the need for monitoring the social-environmental sustainability of the ASBC. To contribute to this, Las Nubes is currently working on a large, multiple stakeholder five year research proposal to develop locally relevant indicators of social wellbeing along

with biophysical indicators of environmental health.



Local Library and Resource Centre.



Lillian Meighan Wright Centre.

For 2017 Las Nubes is working on expanding the Summer Field courses in Costa Rica to a Semester Abroad located mainly on what has been consolidated in the last year as York's Eco-Campus, where we are also about to finish the construction of the Lillian Meighan Wright Center for research, education and community engagement.

Shubhra Gururani

Suburbanization in India, A City in Making: The Paradox of Sustainability in India's Urbanizing Frontiers

Over the last few decades, urban expansion in South Asia has spilled over to its metropolitan fringes. Since the liberalization of the economy in the early nineties, the regimes of land, nature, livelihood, work, and capital have undergone radical transformation and the urban edges of metropolitan cities like New Delhi, Mumbai, Bangalore that mark the nebulous spaces between rural and urban, spaces that are yet to become urban, have become prime destinations for foreign investments, construction booms, housing, and enclave urbanization.



Against this backdrop, this ongoing ethnographic and archival research focuses on the India's Millennium city, the city of Gurgaon located in the outskirts of India's capital, New Delhi, and tracks the competing processes of capitalist accumulation and displacement, agrarian transformation, and property-making. By tracing the colonial and postcolonial histories of land acquisition and conversion and examining the processes of how land and with it nature come to be commodified at different social-political conjunctures, this research shows how in this current moment, the boundaries of the country and the city, of nature and society, inside and outside, public and private are once again being re-constituted. More specifically, the research charts the social-natural processes through which agrarian and pastoral lands become real estate and

show how relations of property in land change, how nature comes to be commodified, and how new registers of values are produced in this rapidly urbanizing frontier.

Acknowledging that the current context of hegemonic neoliberal social ordering in which dissent and conflict have been foreclosed marks a postpolitical condition this research argues that it is not only urgent to scrutinize, describe, and contest the everyday practices through which land/nature are deployed in mapping uneven geographies of property, community, belonging, exclusion and citizenship but it is also necessary to revitalize the political possibilities embedded in the concept of sustainability and carve out new trajectories of urban social-natures, of urban commoning, and social justice.

Michaela Hynie

Living with Climate Change: Mapping Experience and Adaptation in the Global South and North

Living with Climate Change (LCC) is a SSHRC Partnership Development Grant funded from 2013 to 2015. LCC is a network of research programs studying environmental changes in low (Nepal), middle (India) and high income (Canada) countries in order to link the lived experience of community members with policy responses, locally, nationally and internationally. Results of research into the impact of environmental change across sites surfaced several common issues in terms of drivers of change, adaptation strategies, and approaches to commons. One factor that has been of interest is that of unplanned forced migration. Temporary migration as a strategy to cope with environmental change emerged as a major issue in all sites. The patterns and drivers of forced environmental displacement, and its impact on communities left behind, is one of the topics being pursued in the next wave of research.

Sean Kheraj

Nature's Past: Canadian Environmental History Podcast

First established in 2008, Nature's Past: Canadian Environmental History Podcast is a quarterly audio podcast about environmental history research in Canada. Through interviews, round-table discussions, and lectures, Nature's Past disseminates the work of Canada's leading researchers in the field of environmental history to both scholarly and popular audiences. It is the longest-running digital environmental history project in Canada. For the past four years, the podcast has been produced at York University with support from the Network in Canadian History and Environment (NiCHE). Sean Kheraj, an Associate Professor in the Department of History, created and continues to lead this project as host and producer.



Over the course of fifty episodes, the podcast has covered a wide range of topics in environmental history, including conservation, energy consumption, wildlife, urban environments, agri-food systems, tar sands development, environmentalism, e-waste, global warming, and much more. This podcast reaches a wide audience with more than 250 subscribers and 55,000 downloads. Its audience includes scholarly researchers and non-academic listeners from around the world. Educators at both the secondary and post-secondary levels have integrated episodes into their teaching as supplementary resources.

In 2012, the Social Sciences and Humanities Research Council of Canada awarded Nature's Past a Public Outreach Grant to support the production of a special mini-series called "Histories of Canadian Environmental Issues". Graduate student research assistants worked alongside Professor Kheraj to produce eight special episodes focused on key contemporary Canadian environmental issues. These episodes were co-published by NiCHE and Canada's History magazine.

Joanna Robinson

Transitioning to a Green Economy

This research focuses on the human dimensions of environmental change. This research builds off of two completed projects: 1) work published in *Contested Water: The Struggle Against Water Privatization* in the United States and Canada (MIT Press 2013) that examines mobilization to protect water resources and highlights the connection between global policy transformations and the development and outcomes of cross-movement coalitions at the local level, including environmental and labour movements; and 2) a cross-national comparative project, entitled *Building a Green Economy: Environmental-Labor Coalitions in the United States and Canada*, which examines the role of environmental-labour coalitions in creating opportunities to promote green jobs and shape climate change policies in California and British Columbia. Based on in-depth interviews with 58 environmental and labour movement leaders and policy makers, the findings illuminate how the emerging threats of climate change and increasing inequality potentially provide new opportunities for these movements to form long-term sustainable coalitions and impact environmental and labour policies. *Working a Green Job: Workforce Development and the Experience of Workers in the Transition to a Low-Carbon Economy* is a new project that examines the transition to a green economy in Ontario. Funded by a three year SSHRC Partnership Development Grant, the research brings together leading scholars, policy makers and organizations working on issues of environmental policy, labour, inequality and climate change to examine the changing world of work in traditional carbon-intensive sectors. The objective is to examine how this transition affects workers in the auto-manufacturing sector and the potential for investments in a bio-economy to create thousands of living-wage jobs while also serving to reduce greenhouse gas emissions. The research findings will have the potential to shape policies on green workforce development and investment in the green economy in Ontario.

APPENDIX 2:

Inventory of Sustainability Researchers

Faculty of Environmental Studies

Harris Ali

hali@yorku.ca

- environment and health; environmental sociology; disaster management

Erika Batdorf

ebatdorf@yorku.ca

- Member of 9Dragonheads, International EcoArt Collective

Martin Bunch

bunchmj@yorku.ca

- ecosystem approaches to problem solving, adaptive management; systems thinking; ecohealth

Mora Campbell

moracamp@yorku.ca

- environmental ethics & philosophy, phenomenological & narrative methods; time and environmental thought

Ravi de Costa

rdc@yorku.ca

- indigenous politics, policy, reconciliation, rights, conflict & alliances; environmentalist/Indigenous conflicts & alliances

Jose Etcheverry

rejose@yorku.ca

- climate change mitigation, renewable energy, new media & communications

Leesa Fawcett

lfawcett@yorku.ca

- animal studies, environmental ed., environmental justice, biological conservation, food

Sarah Flicker

sarflick@yorku.ca

- community development; environment and health

Honor Ford-Smith

hoperoad@yorku.ca

- community & environmental arts and education

Jennifer Foster

jfoster@yorku.ca

- urban environmental justice, novel ecologies, planning discourse

Gail Fraser

gsfraser@yorku.ca

- ecology, wildlife management, protected areas, extractive industries

Liette Gilbert

gilbert@yorku.ca

- immigration, multiculturalism, citizenship, environmental politics,

Jinthana Haritaworn

haritawo@yorku.ca

- environmental justice, bio-politics

Christina Hoicka

cehoicka@yorku.ca

- community energy planning, decisions, sustainable energy systems, climate change, policy

Ilan Kapoor

ikapoor@yorku.ca

- social/environmental movements, critical development studies

Roger Keil

rkeil@yorku.ca

- suburbanism, urban political ecology, urban governance, urban infrastructures

Stefan Kipfer

kipfer@yorku.ca

- urban politics & planning; colonization, racialization & sub/ex/ urbanization; red-green strategies

Abidin Kusno

akusno15@yorku.ca

- global cities, urban/suburbanism, planning

Timothy Leduc

tleduc@yorku.ca

- intercultural views on climate change; ecological worldviews; environmental education

Ute Lehrer

lehrer@yorku.ca

- political economy of built environment; planning; suburbanism

Brenda Longfellow

brendal@yorku.ca

- SSHRC funded interactive web documentary OFFSHORE <http://offshore-interactive.com/site/>

Rod MacRae

rmacrae@yorku.ca

- food systems & policy; pesticides; localized food and agriculture

James McKernan

mckernan@yorku.ca

- Sustainable Staging and Arts Production

Lewis Molot

lmolot@yorku.ca

- management tools/models for acidification, carbon processing & eutrophication

Phillip Montoya

fmontoya@yorku.ca

- critical development studies; environmental conservation; rural/peasant studies; Latin America

Peter Mulvihill
prm@yorku.ca

- environmental assessment; scenario development; environmental & sustainability thought

Ellie Perkins
esperk@yorku.ca

- trade & environment; ecological economics; community economic development; poverty, debt & environmental degradation

Justin Podur
jpodur@yorku.ca

- landscape ecology; urban wildlife ecology; forest fires; GIS

Barbara Rahder
rahder@yorku.ca

- planning history and education; affordable housing; social sustainability; diversity, equity & justice

Ray Rogers
rrogers@yorku.ca

- conservation and development; social theory and environmental crisis

Liora Salter
lsalter@skywaywest.net

- law, science and technology policy standards

Anders Sandberg
sandberg@yorku.ca

- science and planning; gentrification of conservation; climate/ environmental justice; sustainability & social democracy; urban forestry

Cate Sandilands
essandi@yorku.ca

- environmental cultural studies; environmental writing; sexuality, gender & environmental; queer ecologies

Dayna Scott
DScott@osgoode.yorku.ca

- Environmental Justice; gender & environmental health

Marth Stiegman
stiegman@yorku.ca

- indigenous/settler alliances; food justice

Noël Sturgeon
noelstur@yorku.ca

- representation of nature and environmentalism in popular culture; feminist environmental justice; social movements

Laura Taylor
taylorl9@YORKU.CA

- nature politics in planning; exurban and suburban studies; cultural landscape studies

Frehiwot Tesfaye
ftesfaye@yorku.ca

- agrarian relations & food security; African women and development; displacement; migration

Greg Thiemann
thiemann@yorku.ca

- arctic ecosystems; food web ecology; wildlife conservation; resource management

Peter Timmerman
ptimmer@yorku.ca

- environmental ethics; environmental policy; sustainability

Peter Victor
pvictor@yorku.ca

- ecological economics; environmental policy; sustainability

Traci Warkentin

- environmental education, phenomenology and urban wildlife

Paul Wilkinson
eswilkin@yorku.ca

- resource & environmental management; tourism planning & management; protected area management

Mark Winfield
marksw@yorku.ca

- environmental policy; environmental law; sustainable energy; urban sustainability; climate change policy

Anna Zalik
azalik@yorku.ca

- critical development studies; geopolitics of oil industry;

POSTDOCTORAL FELLOWS

Ella Soper-Jones
jonesell@yorku.ca

- human-animal studies; eco-criticism; environmental literature;

EMERITUS

Deb Barndt
dbarndt@yorku.ca

- agri-food sustainability; food movements; popular education for social & environmental justice; community arts

David Bell
dvjbell@yorku.ca

- governance and sustainability, transformation in decision-making practices, policies, institutions and culture to support sustainability in the public and private sectors

Gene Desfor
desfor@yorku.ca

- waterfronts; urban development processes; environmental policy;

Bryn Green-Wootten

bryngw@yorku.ca

- resource man & policy analysis; epistemology in environmental sustainability; waste man; folk narratives on environment

Famida Handy

fhandy@yorku.ca

- non-profit sector & environmental organizations; environmental economics; environmental non-profit organizations

Bonnie kettel

bkettel@yorku.ca

- gender, environment & development

Alex Murray

amurray@yorku.ca

- design & redesign of work environment; environment & behaviour; food

Becky Peterson

rebecca@yorku.ca

- feminist perspectives on health & environment

Joni Seager

jseager@yorku.ca

- feminist environmentalism & geography; international environmental policy

Ted Spence

esspence@yorku.ca

- land use & transportation planning; resource management; environmental policy & planning; international development

Gerda Wekerle

gwekerle@yorku.ca

- growth, urbanization, sprawl & nature; urban agriculture

Peter Penz

ppenz@yorku.ca

- refugees and migration; environmental displacement

Ph.D STUDENTS

Sally Morgan

eastwardmoving@gmail.com

- MES from York, Earning PhD in Dance, Environmental/Place-Based Educator

Aidan Dahlin Nolan

aidan.dahlinnolan@gmail.com

- performance as a mode and object of literacy education as well as desire to investigate possible “points of contact” between performance and environmental education.

LASSONDE SCHOOL OF ENGINEERING

CIVIL ENGINEERING

Rashid Bashir

- Effect of Climate Change on Geotechnical Design; Mine Waste Management & Soil Cover Design

Ryley Beddoe

- Interaction and influence between climate change and landslide risk

Ahmed Eldyasti

- Waste-to-Energy (WtoE) processes; Greenhouse Gases (GHGs) emissions from wastewater treatment processes

Magdalena Krol

- Innovative groundwater remediation technologies; Green roof design

Jit Sharma

- Sustainable geotechnics

MECHANICAL ENGINEERING

Sunny Leung

<http://m3.apps01.yorku.ca/>

- sustainable energy

Sushanta Mitra

<http://mntl.apps01.yorku.ca/>

- Integrated water management; Water quality; Fuel Cells

EARTH & SPACE SCIENCE ENGINEERING

Costas Armenakis

- innovative geospatial applications to address emerging issues and knowledge-based decision making,

Mark Gordon

- Environmental air borne pollutant monitoring

Christian Haas

<http://www.ualberta.ca/~chaas/>

- Arctic climate system and ecosystem

Mary-Ann Jenkins

- carbon auditing

Tom McElroy

<http://larss.science.yorku.ca/>

- ozone and climate science as well as air pollution research

John E. Moores

- estimates of the methane content of the martian atmosphere from exogenous sources

Peter Taylor

<http://lassonde.yorku.ca/users/petertaylor>

- wind energy studies

Jim Whiteway

- cloud physics; climate; ozone; Martian atmosphere.

OSGOODE HALL LAW SCHOOL

Paul Emond

pemond@osgoode.yorku.ca

- Environmental Protection Law; Environmental Assessment Law; Land Use Planning; Native Rights

Ikechi Mgbeoji

imgbeoji@osgoode.yorku.ca

- International Environmental Law, Biotechnology and Law, Env Law in Developing Countries

Liora Salter

lsalter@osgoode.yorku.ca

- Environmental Law

Dayna Scott

dscott@osgoode.yorku.ca

- Environmental Law & Justice, Gender + Environmental Health, Toxic Substances, Pollution, and Feminist Theory of the Body

Cynthia Williams

cwilliams@osgoode.yorku.ca

- Network for Sustainable Financial Markets, Climate Bonds Initiative, EPA Environmental Finance Advisory Board

Stepan Wood

swood@osgoode.yorku.ca

- corporate social responsibility, sustainability, voluntary standards, climate change, and environmental law

YORK UNIVERSITY LIBRARIES

Yanli Li

yanlili@yorku.ca

- Green trade; Green logistics management; Public-Private Partnerships and Sustainability of Digital Libraries

FACULTY OF SCIENCE

DEPARTMENT OF CHEMISTRY

Jennifer Chen

jilchen@yorku.ca

- solar energy conversion, sustainable clean renewable alternative energy, photovoltaics

Geoffrey Harris

gharris@yorku.ca

- biospheric sources of greenhouse gases (CH₄, N₂O), biomass burning, regional oxidant formation

Donald Hastie

hastie@yorku.ca

- gas/particle separation, Hydrocarbons in the atmosphere

Robert McLaren

rmclaren@yorku.ca

- pollution, emission sources, controlled and chaotic atmosphere studies

Michael Mozurkewich

mozurkew@yorku.ca

- Atmospheric aerosol particles, climate change and the health effects of air pollution

Pierre G. Potvin

pgpotvin@yorku.ca

- electrodes in photovoltaic cells, Direct Methanol Fuel Cells, electrochemical CO₂ reduction

Jochen Rudolph

rudolphj@yorku.ca

- Volatile organic compounds, secondary pollutants in the atmosphere,

EMERITI

A. B. P. Lever

blever@yorku.ca

- Photochemical Generation, Solar Energy Conversion

ADJUNCT FACULTY

Shao-Meng Li

- Air Quality Process Research, contributing to the SMOG scientific understanding

DEPARTMENT OF MATHEMATICS & STATISTICS

Michael Chen

chensy@mathstat.yorku.ca

- wind/solar energy, Renewable energy integration problem, Transmission security and smart grid

Dong Liang

dliang@yorku.ca

- Environmental Computation & Energy Simulation

Huaiping Zhu

huaiping@mathstat.yorku.ca

- Climate Change Modelling, Climate Projections

DEPARTMENT OF PHYSICS AND ASTRONOMY

Jennifer Chen

jilchen@yorku.ca

- sensing platforms and photovoltaic devices

William A. van Wijngaarden

wlaser@yorku.ca

- environmental monitoring, climate change

James A. Whiteway

whiteway@yorku.ca

- urban air pollution

DEPARTMENT OF SCIENCE AND TECHNOLOGY

Ruthanna Dyer

rdyer@yorku.ca

- sustainable development

Myles Ruggles

ruggles@yorku.ca

- indigenous knowledge and environmental risk

DEPARTMENT OF BIOLOGY

Dawn Bazely

dbazely@yorku.ca

- Ecology, Herbivory, Plant-Animal Interactions, Restoration Ecology, Forest Management, Invasive Species, Non-indigenous Plants, Prescribed Burning, Fungal Endophytes, Plant Defences, Science Policy, Climate Change Impacts on Ecosystems, Sustainability, Human-Wildlife Interactions, Urban Ecology Plant Population Biology, Restoration Ecology

Carol Bucking

cbucking@yorku.ca

- Animal Physiology, environmental adaptation, integrative physiology, molecular biology

Andrew Donini

adonini@yorku.ca

- Ion-regulatory Physiology of Aquatic Dipteran Larvae

Scott Kelly

spk@yorku.ca

- Animal Physiology, Endocrinology, Environmental

Christopher Lortie

lortie@yorku.ca

- Understanding system theory, structure, and dynamics of communities including plants, animals, and people.

Laurence Packer
xeromelissa@gmail.com

- Behaviour, ecology, evolutionary biology

Roberto Quinlan
rquinlan@yorku.ca

- Limnology and paleolimnology, aquatic community and ecosystem ecology, stressors on lake and pond systems including human activities and recent climate change.

Sapna Sharma
sharma11@yorku.ca

- Aquatic Ecology, Limnology, Community Ecology, Quantitative Ecology, Multivariate Statistics, Climate Change

Joel Shore
shore@yorku.ca

- Evolutionary biology, ecology and population biology, genetics, plant biology

Bridget Stutchbury
bstutch@yorku.ca

- Ecology and population biology, evolutionary biology, animal biology and physiology, Behaviour ecology, and conservation biology. Evolution of behaviour in birds.

Amro Zayed
zayed@yorku.ca

- Population genetics, Genomics, Behavioural Genetics

EMERITI

Norman Yan
normandyan@gmail.com

- understand the impacts of multiple environmental stressors on the million lakes

ADJUNCT FACULTY

Michael Arts
michael.arts@ryerson.ca

- Ecology, Limnology, Physiology, Photobiology

Keith Somers
keith.somers@ontario.ca

- Aquatic community ecology, specifically understanding, modelling, and predicting the response of aquatic communities to natural and anthropogenic environmental gradients.

FACULTY OF EDUCATION

Steve Alsop

salsop@edu.yorku.ca

- science and technology; public science; epistemology; environmental education; activist pedagogy

Sarah Barrett

sbarrett@edu.yorku.ca

- ecology and ethics; social justice in the physical and ecological sciences; chemistry, physics, and teacher identity

Natalie Davey

daveyn@edu.yorku.ca

- urban studies; urban environments; human geography; space, place, and identity in teaching and education

Isha DeCoito

idecoito@edu.yorku.ca

- eLearning and environmental education; science education; multi-literacies in science teaching and learning

Susan Dion

sdion@edu.yorku.ca

- indigenous epistemology and education; aboriginal knowledge in institutions

Don Dippo

ddippo@edu.yorku.ca

- environmental and sustainability education; Jane/Finch community stewardship; sustainability in teaching; refugee studies

Marcela Duran

mduran@edu.yorku.ca

- equity and social justice in curriculum; university-community partnerships; Jane/Finch

Esther Fine

efine@edu.yorku.ca

- social justice, diversity, and equity; alternative schooling

Steven Gaetz

sgaetz@edu.yorku.ca

- health, social justice, and homelessness; housing and at-risk communities

Celia Haig-Brown

chaigbrown@edu.yorku.ca

- aboriginal knowledge and epistemology; learning from the land; adult education

Joy Mannette

jmannette@edu.yorku.ca

- social justice education; human rights and urban education

Betty Jane Richmond

bjrichmond@edu.yorku.ca

- volunteer labour; nonprofit organizations; economics

Theresa Shanahan
tshanahan@edu.yorku.ca

- human rights in education; access and equity in education; law and governance

Eric Winter

- farming and education; urban geography

Sue Winton
swinton@edu.yorku.ca

- policy, policymaking, and social justice in education; public participation and access in policy

ADJUNCT AND CROSS-APPOINTED

Joseph Sheridan (FES)
jsheridan@edu.yorku.ca

- oral and indigenous history; folklore and environmental education

POST-DOCTORAL FELLOWS

Philip Vaughter

- sustainability in higher education

GLENDON CAMPUS

SOCIOLOGY

Joanna Robinson
jrobinson@glendon.yorku.ca

- environmental social movements; anti-war privatization movements; blue-green coalitions; green workforce

HISTORY / CANADIAN STUDIES

Colin Coates
ccoates@gl.yorku.ca

- environmental history of landscapes; common lands in Canada

ENVIRONMENTAL STUDIES

Jocelyn Martel
jmartel@gl.yorku.ca

- insect ecology and entomology; forest and urban ecosystems; agriculture; environmental stress; pollution

Radu Guiasu
rguiasu@gl.yorku.ca

- species diversity; aquatic ecosystems; conservation

ECONOMICS

Can Erutku

cerutku@glendon.yorku.ca

- economics of natural resources and the environment

Didier Tatoutchoup

dtatoutchoup@glendon.yorku.ca

- environmental economics and natural resources; forest economics

PSYCHOLOGY

Ann Russon

arusson@glendon.yorku.ca

- conservation management; natural habitats of orangutans

INTERNATIONAL STUDIES

Jean-Michel Montsion

jmmontsion@glendon.yorku.ca

- Canadian natural resources; resource extraction; First Nations lands; Canadian North

SCHOOL OF THE ARTS, MEDIA, PERFORMANCE AND DESIGN

Erika Batdorf

ebatdorf@yorku.ca

- Member of 9Dragonheads, International EcoArt Collective

Ian Garrett

igarrett@yorku.ca

- Sustainability and the Arts, EcoArt, EcoDrama

Brenda Longfellow

brendal@yorku.ca

- SSHRC funded interactive web documentary OFFSHORE <http://offshore-interactive.com/site/>

Janine Marchessault

jmarches@yorku.ca

- Creative cultures of urban space and cartographies of place

James McKernan

mckernan@yorku.ca

- Sustainable Staging and Arts Production

Ken Rogers

kr Rogers1@yorku.ca

- intersection of labor, attention, political economy, art practice, and digital media

Judith Rudakoff

rudakoff@yorku.ca

- Common Plants project - <http://www.yorku.ca/gardens/>

Ph.D STUDENTS

Sally Morgan

- MES from York, Earning PhD in Dance, Environmental/Place-Based Educator

Aidan Dahlin Nolan

- Performance as a mode and object of literacy education as well as desire to investigate possible “points of contact” between performance and environmental education.

FACULTY OF HEALTH

SCHOOL OF HEALTH POLICY AND MANAGEMENT

Farah Ahmad

farahmad@yorku.ca

- vulnerable communities, ehealth innovations, migration and health, community-based research

Tamara Daly

dalyt@yorku.ca

- health equity, gender, and long-term care; restructuring of healthcare

Nancy Viva Davis Halifax

nhalifax@yorku.ca

- homelessness and disability in healthcare access, community-based research, healthcare inclusiveness

Serban Dinca-Panaitescu

serband@yorku.ca

- socioeconomic and environmental factors in disease, ehealth and screening initiatives

Christo El Morr

elmorr@yorku.ca

- ehealth, virtual communities, and decision support systems

Liane Ginsburg

lgins@yorku.ca

- patient safety culture and long-term care

Joel Lexchin

jlexchin@yorku.ca

- equity in medication access, restructuring of long-term care

Dennis Raphael

draphael@yorku.ca

- income inequity, poverty, and social health policy

Marcia Rioux

mrioux@yorku.ca

- health and human rights, disability policy, globalization and welfare

Mary Wiktorowicz
mwiktor@yorku.ca

- regional health governance models

DEPARTMENT OF PSYCHOLOGY

Yvonne Bohr
bohry@yorku.ca

- community-based research, culture, social equity and social determinants related to mental health of family and child

Michaela Hynie
mhynie@yorku.ca

- culture, healthcare access, community-based research / social change

SCHOOL OF NURSING

Jacqueline Choiniere
jacchoin@yorku.ca

- influence of political, economic, and social forces on quality of (long-term) care

Isolde Daiski
idaiski@yorku.ca

- social equity and health, poverty and homelessness, healthcare restructuring

Mahdiah (Fay) Dastejerdi
dastjerd@yorku.ca

- healthcare access amongst immigrant communities, aging

Adeline R Falk Rafael
arafael@yorku.ca

- health equity, role of power in public health nursing practice

Elsabeth Jensen
ejensen@yorku.ca

- discharge planning; homelessness and mental health,

Christine Kurtz Landy
kurtzlc@yorku.ca

- health services sustainability and policy, women's health

Judith Ann MacDonnell
jmacdonn@yorku.ca

- minority health promotion, policy and healthcare access

Beryl Pilkington
bpilking@yorku.ca

- refugee community health, poverty and social determinants

KINESIOLOGY AND HEALTH SCIENCE

Chris Ardern

cardern@yorku.ca

- built environment in physical activity and nutrition, social and economic factors in health

Yuka Nakamura

nakamura@yorku.ca

- sociology; social justice in physical activity

Parissa Safai

psafai@yorku.ca

- sociology; sport, physical activity, and health

Sue Vail

svail@yorku.ca

- action research, community health, physical activity

SCHULICH SCHOOL OF BUSINESS

Ellen Auster

eauster@schulich.yorku.ca

- Sustainable Competitive Advantage

Markus Biehl

mbiehl@schulich.yorku.ca

- business, environment, sustainability, environmental management, sustainable management

Wesley Cragg

wcragg@schulich.yorku.ca

- sustainability, business ethics, human rights, business and environment, business and sustainability

Yuval Deutsch

- Corporate social responsibility

Burkard Eberlein

beberlein@schulich.yorku.ca

- energy and environment policy, business and environment

Jeffery Everett

jeverett@schulich.yorku.ca

- sustainability reporting, social and env. accounting,

Irene Henriques

ihenriqu@schulich.yorku.ca

- business and sustainability, energy economics

Bryan Husted

bhusted@schulich.yorku.ca

- environmental attitudes, corporate social responsibility, environmental management

David Johnston
johnston@rogers.com
• Sustainability Management

Geoffrey M Kistruck
gkistruck@schulich.yorku.ca
• Business and Sustainability

Murat Kristal
mkristal@schulich.yorku.ca
• sustainable manufacturing,

Dirk Matten
dmatten@schulich.yorku.ca
• business, environment, sustainability and ethics, environmental management

James McKellar
jmckellar@schulich.yorku.ca
• urban desity, intensification & GHG, carbon footprint & cities

Perry Sadorsky
psadorsk@schulich.yorku.ca
• energy usage and markats, business and sustainability

Mike Valente
mvalente@schulich.yorku.ca
• sustainable development, sustainability orientations,

Scott Yeomans
syeomans@schulich.yorku.ca
• energy and waste performance, nature- and biologically-inspired models

Charlene Ellen Zietsma
czietsma@schulich.yorku.ca
• Business and Sustainability, forestry

Detlev Zwick
dzwick@schulich.yorku.ca
Marketing and Sustainability,

Andrew Crane
acrane@schulich.yorku.ca
• business ethics, sustainability and marketing, tri-sector partnership, modern slavery

LIBERAL ARTS AND PROFESSIONAL STUDIES (LA&PS)

ADMINISTRATIVE STUDIES

Asgary, Ali
asgary@yorku.ca
• urban disaster mitigation, business continuity planning, economic assessment of disaster risk mitigation measures, disaster economics, post-disaster recovery and reconstruction, agent based modeling, GIS and

virtual technology applications in disaster management.

Doorey, David
ddoorey@yorku.ca
• Green labour law

Joel Marcus
marcus@yorku.ca
• specializes in the relationship between personal values and the propensity to engage in sustainable corporate actions across the economic, social, and environmental domains.

Ng, Peggy
peggyng@yorku.ca
• biostatistics, experimental design, psychometrics and their applications in clinical trials, environmental health, and quality of life in oncology

Nirupama, Niru
nirupama@yorku.ca
• disaster risk management; business continuity; physical dynamics of natural hazards; contemporary issues in disaster management; disaster management using GIS and remote sensing techniques; and multi-criteria decision making using fuzzy logic concept

Qudrat-Ullah, Hassan
hassanq@yorku.ca
• dynamic decision making, system dynamics modeling, computer-simulated interactive learning environments, and energy planning models

Robinson, Chris
crobinso@yorku.ca
• personal finance, retirement planning, corporate governance, financial statement analysis, critical and alternative perspectives on finance and accounting, regulation of payday lending, dividend policy of corporations and case study research of corporate capital budgeting and environmental decision-making

Toyasaki, Fuminori
toyasaki@yorku.ca
• sustainable supply chain designs involving environmental and disaster/emergency issues. Specifically, his research interests are closed-loop supply chains and humanitarian logistics

SCHOOL OF GENDER, SEXUALITY AND WOMEN'S STUDIES

Kainer, Jan
jkainer@yorku.ca
• sustainable food production; sustainability training for your farmers

DEPARTMENT OF HISTORY

Coates, Colin
coates@gl.yorku.ca
• early French Canada, nationalism, popular culture, environmental history

Hoffmann, Richard C.

medfish@yorku.ca

- Environmental, economic, and social history of medieval and early modern Europe, notably involving natural resource use (fisheries), human ecology, peasants, frontiers, and intercultural relations.

Kheraj, Sean

kheraj@yorku.ca

- historical relationship between people and animals in urban environments

Neill, Deborah

dneill@yorku.ca

- European Colonialism, History of Medicine, humanitarianism, globalization, food and drink

Podruchny, Carolyn

carolynp@yorku.ca

- The meeting of Europeans, particularly French, and indigenous peoples, particularly Algonquian speakers, in the North American fur trade. I focus on cultural, social, gender, labour, and environmental questions.

DEPARTMENT OF HUMANITIES

Katharine Anderson

kateya@yorku.ca

- environmental science history & wider cultural and social concerns, env science and public life

Jody Berland

jberland@yorku.ca

- Animal Studies, Contemporary Environmental and Posthumanist Theory

Joan Steigerwald

steiger@yorku.ca

- instruments and media in investigating organic worlds, Cultural Enframing of Nature

SCHOOL OF INFORMATION TECHNOLOGY

Peter Khaiter

pkhaiter@yorku.ca

- assessment and management of natural resources.

DEPARTMENT OF PHILOSOPHY

Kristin Andrews

andrewsk@yorku.ca

- human-animal relations & relationships, animal cognition

Duff Waring

dwaring@yorku.ca

- Bioethics

DEPARTMENT OF POLITICAL SCIENCE

Asher Horowitz

horowitz@yorku.ca

- Ecology and Political Thought

Robert E. Latham

rlatham1@yorku.ca

- political economy environmental studies, political ecology, international sociology and IR

Gabrielle A Slowey

gaslowey@yorku.ca

- Aboriginal Peoples, Northern Development , Resource Exploration and Development

DEPARTMENT OF SOCIOLOGY

Andil Gosine

andil@yorku.ca

- Environmental Justice/Queer Ecology

Glenn Stalker

gstalker@yorku.ca

Environmental Sociology, Climate change and pro-environmental beliefs

LAW & SOCIETY (DEPARTMENT OF SOCIAL SCIENCE)

David Szablowski

davidsz@yorku.ca

- law and globalization; regulation and governance theory; transnational law; non-state regulation; global legal pluralism; extractive industries (oil, mining and gas projects); indigenous rights; Latin America; international financial institutions

CRIMINOLOGY (DEPARTMENT OF SOCIAL SCIENCE)

Amanda Glasbeek

aglasbee@yorku.ca

- gendered fear of crime, risk discourses, and concepts of urban safety

BUSINESS & SOCIETY (DEPARTMENT OF SOCIAL SCIENCE)

Kean Birch

kean@yorku.ca

- Sustainable transitions; sustainable infrastructure; bioenergy; biofuels; bio-economy

Caroline Hossein

chossein@yorku.ca

- community economic development in low income communities and examining the disbursement of financial resources along the intersection of identities such as race, class and gender.

JJ McMurtry
jmcmurtr@yorku.ca

- cooperative difference in alternative energy nationally and internationally, the Social Economy as a green employer, and on the roll of small producer organizations in Fair Trade

Darryl Reed
dreed@yorku.ca

- Fair trade; corporate governance, community economic development, business ethics and development ethics.

WORK AND LABOUR STUDIES

Carla Lipsig-Mumme
carlalm@yorku.ca

- Climate change; linking adaptation and mitigation to slow global warming; greening the labour process; climate, labour and work.

URBAN STUDIES (DEPARTMENT OF SOCIAL SCIENCE)

Lisa B Welch Drummond
drummond@yorku.ca

- Asian/Pacific Studies , Geography , Urban Social Life, Vietnam, Urban Water and Climate Resilience

Linda Peake
lpeake@yorku.ca

- gendered social organization of urban space, the articulation of social relations of class, gender, race and sexuality in relation to urban places in Canada, the USA and Guyana

Douglas Young
dogoyo@yorku.ca

- Processes of suburban decline and renewal in Toronto and Leipzig

INTERNATIONAL DEVELOPMENT STUDIES (DEPARTMENT OF SOCIAL SCIENCE)

Eduardo Canel
ecanel@yorku.ca

- State-Civil Society Relations; Socio-environmental Conflicts; Extractive Industries; Social Movements; Participatory Democracy; Decentralization and Local Governance; Social Capital; Latin America

Miguel Gonzalez Perez
migon@yorku.ca

- Indigenous Peoples , Fisheries , International Development Studies, Social Movements, Territorial Autonomous Regimes, Small-Scale Fisheries

Uwafiokun Idemudia
idemudia@yorku.ca

- Corporate Social Responsibility and the extractive industry; the relationship between natural resources, sustainable development and conflict in the global south; and political ecology and environmental security.

HEALTH & SOCIETY

Harriet Rosenberg (Emeritus)

hrosenbe@yorku.ca

- Women's Health Advocacy; Environmental Health, Toxic Exposures in Domestic Environments; Aging and Caregiving; AIDS in southern Africa; Women and Cholesterol Lowering Drugs; Statin Drugs and Seniors Health

DEPARTMENT OF ANTHROPOLOGY

Naomi Adelson

nadelson@yorku.ca

- critical study of bodies and health as well as with her ongoing work with the Cree (Iiyiyu) of northern Quebec

Shubhra Gururani

gururani@yorku.ca

- critical political ecologies, space and place, postcolonial development, and histories of science and nature

Teresa Holmes

jth@yorku.ca

- tourism studies, historical anthropology, and colonial and postcolonial studies

Carlota McAllister

carlota@yorku.ca

- Property & nature, Capitalist nature, human-nonhuman, Chile, Guatemala, violence

Natasha Myers

nmyers@yorku.ca

- Affective ecologies, plant politics / publics, forms of life in the contemporary arts and sciences

Marilyn Silverman

msilverm@yorku.ca

- Inequality, rural & agrarian societies cross-culturally

Christianne Stephens

stephecv@yorku.ca

- medical anthropologist who specializes in the anthropology of health and Indigenous health

DEPARTMENT OF COMMUNICATION STUDIES STUDIES

Tokunbo Ojo

Email: tojo@yorku.ca

- Development Communication; Global Media Studies; Political Communication; Ethnic Media and Journalistic Practices; Global News flows and Representation; ICTs and Mobile Phone for Development.

DEPARTMENT OF ECONOMICS

Buckley, Neil

nbuckley@yorku.ca

- Health Economics, Environmental and Natural Resource Economics and Experimental Economics. My particular research interests include empirical investigations of public and private health care finance, emission

permit trading and common pool resource management

Ferrara, Ida
iferrara@yorku.ca

- applied micro economist, I rely mostly on theoretical frameworks to analyze policy questions, particularly as they relate to the environment. Some of my recent theoretical works include analyses of the linkages between trade and the environment, social/moral considerations in voluntary contributions and environmental decisions, and the cultural transmission of environmental attitudes

Lagerlöf, Nils-Petter
lagerlof@econ.yorku.ca

- economic growth and development, with applications related to demography and political economy

Maitra, Sudeshna
smaitra@econ.yorku.ca

- Development Economics; Health Economics

Malik, Sadia
smmalik@yorku.ca

- Development Economics; Health Economics; human development and capabilities

Podhorsky, Andrea
andrea@econ.yorku.ca

- environmental economics, international trade and applied microeconomics. The major focus of my research has been on environmental certification programs; I have studied their impact on international trade, their optimal design, and their effectiveness relative to other policy instruments

Smith, J Barry
jbsmith@yorku.ca

- Econometrics, Environmental Economics, Labour Economics

DEPARTMENT OF ENGLISH

Vernonja R Alston
valston@yorku.ca

- Latin American and Caribbean literature (in English, French, and Spanish), Indigenous North American literature, Multiethnic literature of the United States, literary and cultural theory, theories of transnationalism, cosmopolitanism, and diaspora, performance studies, environmental justice literature, and legal theory

Rishma Dunlop
rdunlop@yorku.ca

- Rishma Dunlop's teaching and research interests are multidisciplinary and include contemporary fiction and poetry; creative nonfiction; English and World literatures; Canadian literature; literary translation; diasporic literatures; literature of witness; creative writing; cultural studies; aesthetics; fine arts practices; environmental writing, documentary photography; medical humanities and narrative medicine.

David Goldstein
dgold@yorku.ca

- sixteenth- and seventeenth-century British literature, food studies, poetry writing and translation, contemporary poetry and poetics, literary and cultural theory, and book history.

EQUITY STUDIES

Foster, Lorne

lfoster@yorku.ca

- social justice and human rights, social inequality and social stratification, anti-racism and anti-discrimination, and the marginalization of racialized urban communities.

Lawrence, Bonita

bonital@yorku.ca

- Regulation of Native identity; gender and colonization; Indigenous justice, sovereignty and literature; traditional Native singing.

McNab, David

dtmcnab@yorku.ca

Aboriginal Land and Treaty Rights issues in Canada;

- British imperial history; Canadian history; Ontario history.

DEPARTMENT OF GEOGRAPHY

Alison Bain

abain@yorku.ca

- urban social geography, geographies of the arts, creativity & sexuality in Canadian cities

Ranu Basu

ranubasu@yorku.ca

- urban social and political geography, geography and planning

Rick Bello

bello@yorku.ca

- climate change, greenhouse gas emissions, Arctic Canada, wind energy, carbon dynamics, vector borne diseases, evapotranspiration, urban water budgets

Ulrich Best

ubest@yorku.ca

- German and European studies, urban geography

Qiuming Cheng

qiuming@yorku.ca

- GIS, natural resources assessment, mathematical geology

Raju Das

rajudas@yorku.ca

- Marxist political economy, state theory, space and state- society relations, international development, labour conditions, social capital, social movements, (agro-)globalization, South Asia

Taly Drezner

drezner@yorku.ca

- biogeography, tropical ecosystems, arid lands climate adaptation

William Jenkins

wjenkins@yorku.ca

- cultural and historical geography, Canada and the British imperial world

Jennifer Hyndman
jhyndman@yorku.ca

- geographies of forced migration/immigration, humanitarian aid in response to conflict/asylum/disasters, refuge (re)settlement, critical and feminist geopolitics

Philip Kelly
pfkelly@yorku.ca

- economic geography, labour, migration, youth, South East Asia, Philippines, Canada

Min-Jung Kwak
mikwak@yorku.ca

- urban transnationalism, immigrant entrepreneurship, education migration

Sara Koopman
skoopman@yorku.ca

- feminist geography, geopolitics, postcolonialism, race, social justice and peacekeeping

Lucia Lo
lucialo@yorku.ca

- immigration, settlement, integration and urban transformation, settlement services, consumer preference and shopping behaviour, food, culture and identity, Chinese diaspora

Elizabeth Lunstrum
lunstrum@yorku.ca

- political ecology, political geography, politics of environmental conservation, Southern Africa & North America

Andrew Medeiros
fraggle@yorku.ca

- Arctic ecosystems, biogeochemistry, aquatic ecology, environmental biomonitoring, paleoecology, environmental change, biogeography

Jospeh Mensah
jmensah@yorku.ca

- critical development theory and Africa, gender and development, space, race and employment, geography of Aboriginal land claims

Valerie Preston
vpreston@yorku.ca

- gender and urban labour markets, immigration and Canadian cities, social and economic effects of economic restructuring

Tarmo Remmel
remmelt@yorku.ca

- remote sensing and GIS algorithm development, Boreal forest

Andre Robert
arobert@yorku.ca

- fluvial geomorphology, forms and processes in alluvial channels

Robin Roth
rothr@yorku.ca

- political ecology, environmental conservation and conflict, highland Southeast Asia

Steven Tufts
tufts@yorku.ca

- economic/labour geography, geographies of labour markets and unions

Peter Vandergeest
pvander@yorku.ca

- environments and identities in Southeast Asia, agro food systems and industrial aquaculture, cultural politics of development

Patricia Wood
pwood@yorku.ca

- cities, citizenship, identity, diversity, property, territory and attachment to place

Kathy Young
klyoung@yorku.ca

- high arctic wetland hydrology, ecohydrology, hydroclimatology, snow hydrology, climate change

AD Research Additions
Marina Erechtkhoukova
marina@yorku.ca

- model-driven and data-driven decision support in environmental sustainability, application of machine learning techniques to water resources management,

Kelly Thomson
thomsonk@yorku.ca

- Sustainability, Social Capital and the Canadian ICT Sector

Mark Schwartz
schwartz@yorku.ca

- Sustainability and Historical Injustice: Lessons from the Moose River Basin

Susan McGrath
smcgrath@yorku.ca

- Social Sustainability

Idil Boran
iboran@yorku.ca

- Social Sciences and Humanities Research Council (SSHRC) Standard Research Grant for her project titled "The Idea

Alena Kimakova
akimakov@yorku.ca

- Program evaluation for the Ontario Ministry of the Environment

Glenn J Stalker
gstalker@yorku.ca

- Climate change and pro-environmental beliefs, behaviours and support for policy: evidence from a survey of Canadians

SAMPLE THESES

DOCTORAL DISSERTATIONS

Bieler, Andrew Theodore Cecil
Communication & Culture, Joint Program with Ryerson University
Exhibiting Climate Change: An Examination of the Thresholds of Arts- Sciences Collaborations in the Context of Learning for a Sustainable Future
2014

Biglari, Javad Sadeghzadeh
Economics
Essays On Productivity and Resource Reallocation
2014

Degroot, Dagomar Sebastiaan
History The Frigid Golden Age: Experiencing Climate Change in the Dutch Republic, 1560-1720
2014

Holmes, Mark Robert
Environmental Studies
Testing the Implications of an Integrated Rural Tourism Framework for the Niagara Wine Region
2014

Lamb, Vanessa Anne
Geography
Ecologies of Rule and Resistance: Making Knowledge, Borders and Environmental Governance at the Salween River, Thailand
2014

Lebel, Sabine
Communication & Culture
The Life Cycle of the Computer: A Study in the Materialities of Risk
2014

Rosa, Vanessa Anne
Sociology
Remaking the Nation State: Multiculturalism, Neoliberalism, and Urban Revitalization
2014

Shrimali, Ritika
Geography Spaces of Corporate Control in Agriculture: A Critical Study of Contract Farming in the Indian State of Punjab
2014

Watson, Andrew
History
Poor Soils and Rich Folks: Household Economics and Sustainability in Muskoka, 1850-1920
2014

Yoreh, Tanhum Siah

Humanities

The Jewish Prohibition Against Wastefulness: The Evolution of an Environmental Ethic
2014

Zylberberg, David

History

Plants and Fossils: Household Fuel Consumption in Hampshire and the West Riding of Yorkshire
1750-1830
2014

MASTERS THESES

Mair, David Graeme

Geography

Boundaries, Narrative Frames, and the Politics of Place in Public Housing Redevelopment: Exploring
Toronto's Don Mount Court/Rivertowne
2014

Upward, Antony

Environmental Studies

Towards an Ontology and Canvas for Strongly Sustainable Business Models: A Systemic Design Science Ex-
ploration
2014

APPENDIX 3:

Sustainability Partnerships and Funding Opportunities

ENTITY / PROJECT	SCOPE	SECTOR	WEBSITE
Aboriginal Fund for Species at Risk	National	Environmental	https://www.retablissement-recovery.gc.ca/afsar-faep/index.cfm
Atlantic Ecosystem Initiatives	Provincial/ Regional	Environmental	http://www.ec.gc.ca/iea-aei/
Aboriginal Healing Foundation	National	Social	http://www.ahf.ca/
Alberta Ecotrust	Regional	Environmental	http://albertaecotrust.com/
Bill and Melinda Gates Foundation	International	Education, Technology, Global Health	http://www.gatesfoundation.org/
Bullitt Foundation	Regional (Pacific North-west)	Environmental	http://www.bullitt.org/
Burlington Community Foundation	Local	Social, Environmental, Economic, Sustainability	http://www.burlingtonfoundation.org/
Canada Cultural Investment Fund	National	Social, Cultural	http://www.pch.gc.ca/eng/1268609659093
Canada First Research Excellence Fund	National	Environmental	http://www.cfref-apogee.gc.ca/
Canada Foundation for Innovation	National	Sustainability, Innovation	https://www.innovation.ca/
Canadian Geological Foundation	National	Science	http://www.canadiangeologicalfoundation.org/
Canadian Women's Foundation	National	Social	http://www.canadianwomen.org/
Caterpillar Foundation	International	Environmental	http://www.caterpillar.com/
Chatham Kent Community Foundation	Local	Social, Environmental, Economic, Sustainability	http://chathamkentcommunityfoundation.ca/
Clean Energy Fund	National	Innovative	

ENTITY / PROJECT	SCOPE	SECTOR	WEBSITE
Climate Change Adaptation Fund	Local	Environmental	http://climatechange.gov.ns.ca/
Columbia Institute	National	Social	http://www.columbiainstitute.ca/
Columbian Basin Trust	Regional	Environmental, Social, Economic	http://www.cbt.org/Funding/
Commonwealth Foundation	International	Cultural, Social, Economic	http://www.commonwealthfoundation.org/
Community Foundation of Canada	National	Economic, Leadership	http://communityfoundations.ca/
Community Interaction Program - St. Lawrence Action Plan	Regional	Environmental	http://planstlaurent.qc.ca/en/home.html
Cottonwood Foundation	International	Environmental, Cultural, Social	http://www.cottonwoodfdn.org/
Dreamcatcher Foundation	National	Aboriginal, Social, Cultural, Economic	http://www.dcfund.ca/
Drummond Foundation	National	Social, Health	http://www.drummondfoundation.ca/
Earth Run Foundation	National	Sustainability, Environmental	http://earthrun.com/
Eastern Ontario Development Program	Regional	Economic	http://www.feddevontario.gc.ca/
ecoENERGY for Renewable Power	National	Innovative	http://www.nrcan.gc.ca/
ecoENERGY Innovation Initiative	National	Innovative	http://www.nrcan.gc.ca/
EJLB Foundation	National	Neuroscience, Environmental	http://www.ejlb.qc.ca/
Environmental Damages Fund	National	Environmental	https://www.ec.gc.ca/

ENTITY / PROJECT	SCOPE	SECTOR	WEBSITE
Fluor	International	Environmental	http://www.fluor.com/
Forzani Group Foundation	National	Health, Wellness	https://www.fglsports.com/
Gainey Foundation	National	Environmental	http://www.gaineyfoundation.com/
Gairdner Foundation	International	Biomedical	http://www.gairdner.org/
George Cedric Metcalf Charitable Foundation	National	Environmental, Social, Economic	http://metcalffoundation.com/
Great Lakes Sustainability Fund - Water	Regional/ Provincial	Environmental	https://www.ec.gc.ca/
Green Municipal Fund	Local	Economic	http://www.fcm.ca/
Habitat Stewardship Program for Species at Risk	National	Environmental	https://www.ec.gc.ca/
Heritage Canada The National Trust	National	Social	https://www.heritagecanada.org/
Ivey Foundation	National	Environmental	http://www.ivey.org/
J.W. McConnell Family Foundation Fund	National	Social	http://www.mcconnellfoundation.ca
James S. McDonnell Foundation	International	Environmental, Sustainability	https://www.jsmf.org/

ENTITY / PROJECT	SCOPE	SECTOR	WEBSITE
Lake Simcoe/South-eastern Georgian Bay Clean-Up Fund	Provincial/ Regional	Environmental	https://www.ec.gc.ca/
Lake Winnipeg Basin Stewardship-Fund	Provincial/ Regional	Environmental	https://www.ec.gc.ca/
Minor Foundation	International	Climate Change	http://www.minor-foundation.no/
National Conservation Plan –National Wetland Conservation Fund	National	Environmental	https://www.ec.gc.ca/
Program of Energy Research and-Development (PERD)	National	Innovative	http://www.nrcan.gc.ca/
RBC Community Sustainability Projects	National	Social, Environmental, Science, Economic, Innovation	http://www.rbc.com/
Science Horizons Youth Internship-Program	Local/ Regional/ Provincial	Social	https://www.ec.gc.ca/
Sustainable Development Technology Canada	National	Innovation	www.sdte.ca
TD Green Streets Program	Local	Environmental	https://treecanada.ca/en/
The Actuarial Foundation of Canada	National	Risk Management	http://www.afc-fac.ca/
The Alva Foundation	National	Health, Social	http://www.alva.ca/
The Brainerd Foundation	National	Environmental, Sustainability	http://www.brainerd.org/
The Brian Bronfman Family Foundation	National	Social	http://www.bronfman.ca/home.php

ENTITY / PROJECT	SCOPE	SECTOR	WEBSITE
The Canadian Race Relations Foundation	National	Race Relations	http://www.crrf-fcrr.ca/en/
The Cora Foundation	National	Social (Children's issues)	http://www.chezcora.com/our-company/cora-fondation
The David and Lucile Packard Foundation	International	Climate Change	http://www.packard.org/
The Rockefeller Foundation	International	Environmental	https://www.rockefellerfoundation.org/
The Salamander Foundation	National	Environmental	http://www.salamanderfoundation.org/
The Virtual Foundation	International	Environment, Sustainable Development,	http://www.virtualfoundation.org/
UPS Foundation	International	Energy Conservation, Reforestation	http://www.community.ups.com/the-ups-foundation/
W. Garfield Weston Foundation	National	Environmental	http://www.westonfoundation.org/
Wildlife Habitat Canada	National	Environmental, Conservation	http://www.whc.org/